

From run-down student digs back to stately Georgian splendour...



# History in the making

A restored stately home in London that's set for a new golden age

**S**et on the edge of London's Richmond Park, the Georgian splendour of Templeton House is worthy of Jane Austen's *Pride and Prejudice*. Built in 1786 for Lady Templeton, who designed patterns for Wedgwood, its history of residents includes the Governor of the Bank of England and Lady Cornelia Spencer-Churchill, who invited her nephew Winston Churchill to stay for a year in 1919.

Despite its rich history and location, within London's Zone 3, the 3,250-square-metre property slipped under the radar for nearly 70 years as it served as university halls from 1945. However, that all changed when its current owners set about transforming its 27 dilapidated bedsits back into a grand residence. The painstaking restoration of the Grade II-listed building into eight immaculate suites was completed from the outside in. Three craftspeople spent three years raking and pointing with traditional limestone and addressing the colour variation of its exterior brickwork.

Meanwhile, inside, four-centuries-old oak flooring was installed, 30 antique chandeliers have been rewired and Wedgwood has recreated original mouldings for the ceilings of the Churchill Drawing Room and the Lady Templeton Parlour. The ironmongery was also painstakingly recreated with 1,100 pieces individually crafted over four years by van Cronenburg in Belgium. "I remember the day that I was first called in to look at the property, when it was run-down accommodation," says Andrew Phillips, global director of the Wealth Partnership. "Seven years later, it is one of the most exquisite estates that I have seen during my time in the business."

Landscape architect and historian Todd Longstaffe-Gowan was brought in to landscape the grounds, which are set within more than 1.2 hectares. "Templeton is exceptional in many regards, but principally on account of its rarity: few 18th-century London mansions are fortunate enough to possess as much of their original pleasure grounds," he says. The result of Longstaffe-Gowan's work

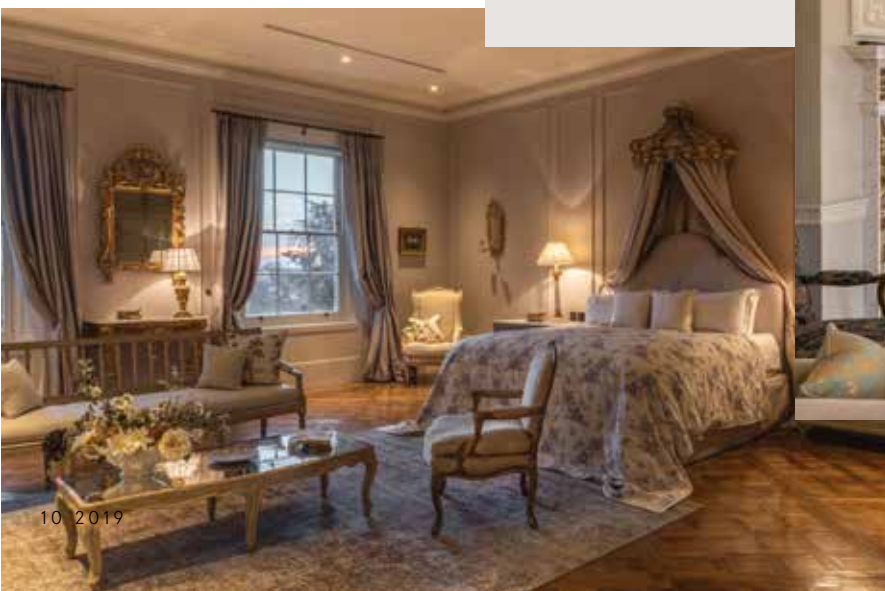


Wedgwood recreated the original mouldings for the ceilings

"It's one of the most exquisite estates I've seen in my time in the business"



Templeton House is available for short-term and long-term rental. For more information, email Andrew Phillips, global director of the Wealth Partnership, at [wealthpartnership@hamptons-int.com](mailto:wealthpartnership@hamptons-int.com) or call +44 (0)7770 803312



is that the property has the feeling of a country house despite its London postcode. "The final phase will include a six-bedroom dower house, four mews-style cottages, a stable block and an art studio," adds Phillips. "Where else would you find that in London?"

The house has also been equipped with a Roman-inspired, world-class spa (which includes a 25-metre pool), a championship-standard all-weather tennis court and a cinema room with a 142-inch screen. For those looking for a taste of stately living the estate is now available to rent, with a team of staff including a butler, chef, house manager and housekeepers all delivering a superyacht level of service in an outstanding setting.

